

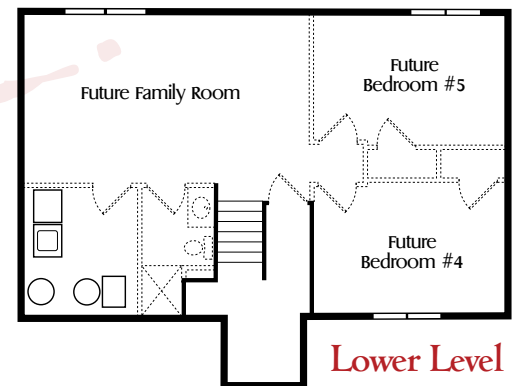
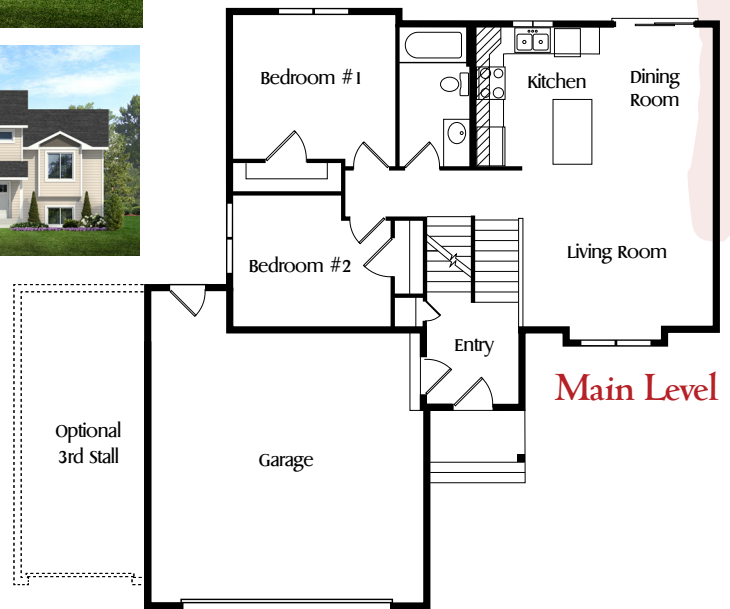
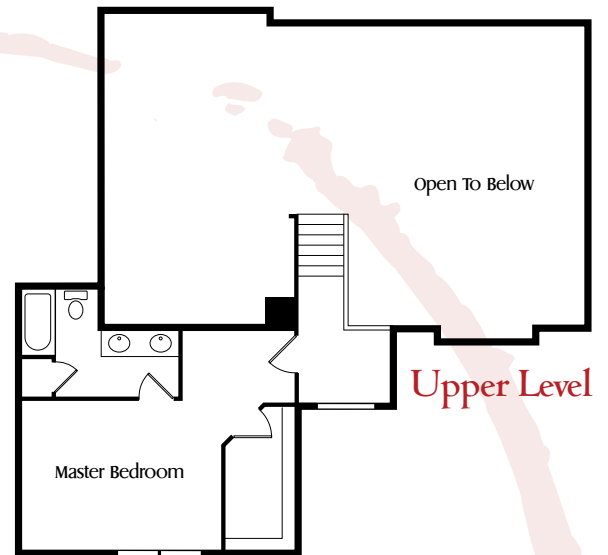
# The Sequoia

## Select Series



The Sequoia's unique floor plan is a popular choice for those looking for a master suite at a great price! This 3 bed 2 bath home takes a classic split level home to the next level by adding a master suite above the garage. The master suite includes a vaulted ceiling, a walk-in closet, and a full bath with a double vanity. Need more space? Add a 3rd stall garage or finish the basement for 2 more bedrooms, 1 bathroom, and another cozy family room. You are able to make this home truly yours by choosing your own selections including: granite, flooring, cabinetry colors, exterior colors, and other quality finishings!

Choose which plan you would like starting at 913 square feet up to 960 square feet



**OEVERING HOMES**  
RE - ESTABLISHED 2019