

Chapman Acres - Hudson, WI

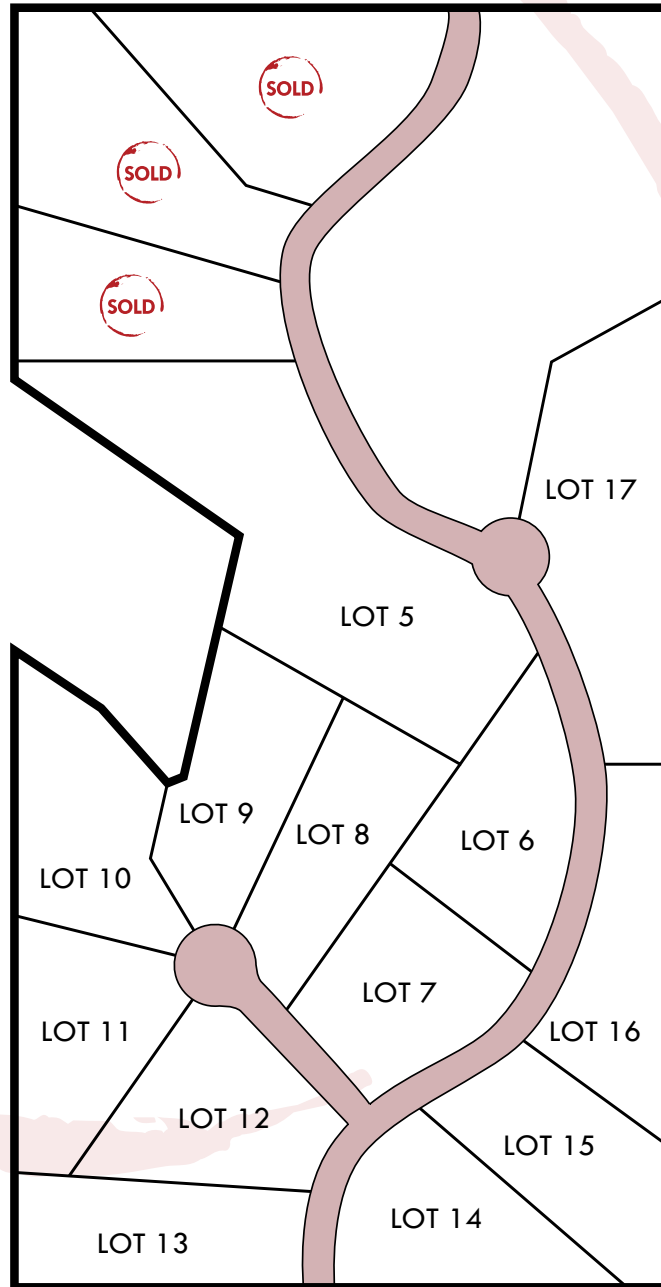
Home Packages from the \$500's

Picture yourself in a brand new home in Chapman Acres located in Hudson, WI. The development features rolling hills, mature trees, walk-out sites and scenic views from these 3+ acre lots in St Joseph township within the Hudson School district and new Perch Lake. You have quick access to County Road E, short drives to both Hudson and Stillwater makes this location incredibly desirable and convenient. Act now and reserve your lots before they are gone.

Contact an Oeving Homes Representative for more information.

Directions

From County Road E, South onto 54th Street to the lots.



OEVERING HOMES

RE - ESTABLISHED 2019